

# Epic Kiosk

Settings on how to get the quick badge in delivery of Epic Hyperspace.

- [Badge reader setup](#)

# Badge reader setup

## Citrix studio

Configuring a policy for the delivery group that will allow usb redirect of badge reader.

Edit Setting

### Client USB device redirection rules

Values:

Allow: VID=0c27 PID=3bfa #RFIDeas Card Reader for Igle Only	-	↑	↓
Allow: VID=06A8 PID=0043 #Topaz HSB Signature Pad	-	↑	↓
Allow: VID=0403 PID=6001 #Topaz BSB Signature Pad	-	↑	↓
Allow: VID=0554 PID=1001 SubClass=01 Prot=00 # PowerMicII-NS	-	↑	↓
DENY: #Deny all other devices	-	↑	↓

Add

☐ Use default value:

#### ▼ Applies to the following VDA versions

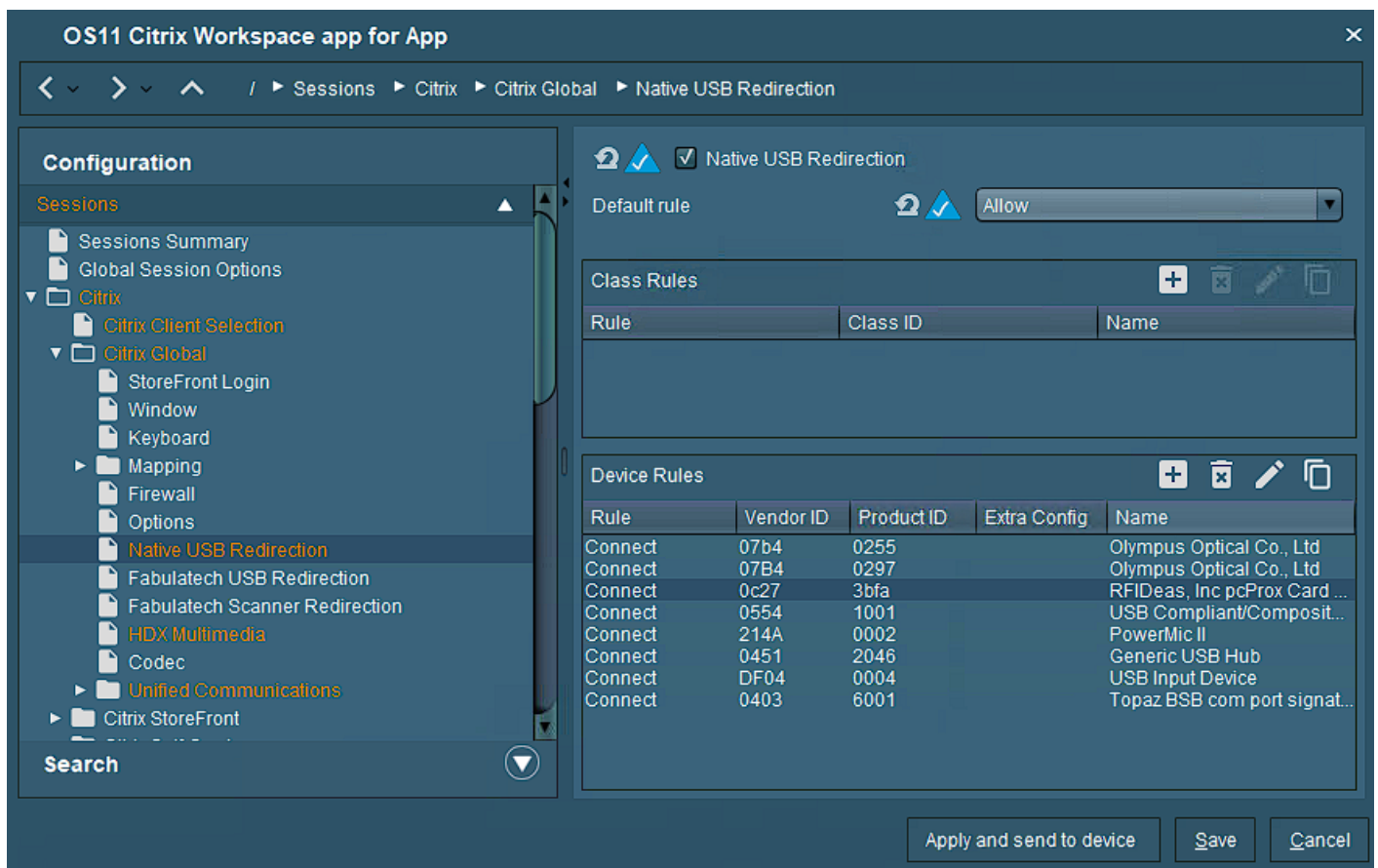
Virtual Delivery Agent: 5.6 Feature Pack 1, 7.0 Server OS, 7.0 Desktop OS, 7.1 Server OS, 7.1 Desktop OS, 7.5 Server OS, 7.5 Desktop OS, 7.6 Server OS, 7.6 Desktop OS, 7.7 Server OS, 7.7 Desktop OS, 7.8 Server OS, 7.8 Desktop OS, 7.9 Server OS, 7.9 Desktop OS, 7.11 Server OS, 7.11 Desktop OS, 7.12 Server OS, 7.12 Desktop OS, 7.13 Server OS, 7.13 Desktop OS, 7.14 Server OS, 7.14 Desktop OS, 7.15 Server OS, 7.15 Desktop OS, 7.16 Server OS, 7.16 Desktop OS, 7.17 Server OS, 7.17 Desktop OS, 7.18 Server OS, 7.18 Desktop OS, 1808 Multi-session OS, 1808 Single-session OS, 1811 Multi-session OS, 1811 Single-session OS, 1903 Multi-session OS, 1903 Single-session OS, 1906 Multi-session OS, 1906 Single-session OS, 1909 Multi-session OS, 1909 Single-

OK

Cancel

## Igel ums

Configuring a profile to connect the badge reader automatically to the launched Citrix app or desktop.



## Resources

Here is the Igel profiles used. You will need to set the user name and password plus edit a few things including the storefront url. This in addition to supplying a png for app and background. The ice cream theme is very cool and configures a bunch of things to make the desktop experience nice.

- [OS11 Citrix Workspace app for App.xml](#)
- [OS11 Citrix Workspace app User.xml](#)
- [OS11 Hyperspace kiosk desktop icon Auto Launch.xml](#)
- [OS11 Theme - Ice Cream.xml](#)
- [OS11 Display and Sound settings.xml](#)
- [OS11 Power settings.xml](#)